

#Reclaim
Freedom



PRESENTS

SATYA PAUL
BY RAJESH PRATAP SINGH

LOOKBOOK



R|Elan™ FABRICS STOLE THE SHOW!

R|Elan™ collaborated with Rajesh Pratap Singh of Satya Paul for the 9th season at Lakmé Fashion Week with their specially commissioned adaptive and responsive 'smart fabrics'.

- **R|Elan™ GreenGold:** Fabric made from recycled 100% post-consumer used PET bottles.
- **R|Elan™ Kooltex:** Specially engineered fabric that allows rapid moisture management with quick sweat absorption and rapid wicking to the outer surface, to speed up evaporation. Keeping the garment dry and cool.
- **R|Elan™ SuperFeel:** Fabric that provides creation of soft and luxurious apparel with phenomenal drape and fall.

The resulting collection using R|Elan™'s GreenGold, Kooltex & SuperFeel fabrics, enhanced the glamour quotient of the show while bringing in the adaptability and versatility of smart fabrics.

Being the first on-ground LFW post-pandemic, The New Order collection was extremely well received by audiences. The show was held in the swimming pool area of Major Dhyan Chand National Stadium, which was something we did for the first time.

The SFX of the show and the beauty of the ensembles really brought alive our concept of **#ReclaimFreedom**.

This LookBook showcases the fresh & exciting collection designed by Satya Paul and renowned designer Rajesh Pratap Singh, symbolizing that everything in the fashion industry is back to normal and that we can hope to see the future with fresh eyes.





SATYA PAUL

BY RAJESH PRATAP SINGH

The R|Elan™ X Satya Paul by Rajesh Pratap Singh was a roaring success at the recently concluded FDCI X Lakme Fashion Week, in New Delhi.

The accomplished designer said “New Order is a collection of clothes that spells Evening with a capital E. We’re out and about again, and the smart, sustainable fabrics provided by R|Elan™ give flight to our flow.”





MOOD BOARD

A powerful reaction to the formalism and strict categories that organised existing art institutions in the early 1900s, art nouveau emerged as resistance. Symbolised by the curvaceous, disobedient line, the work of Klimt, Muccha and Toulouse Lautrec, it demanded a return to nature. It shook things up, reminding us that we are not automated machines. We are sinuous, alive and we deserve to be free.





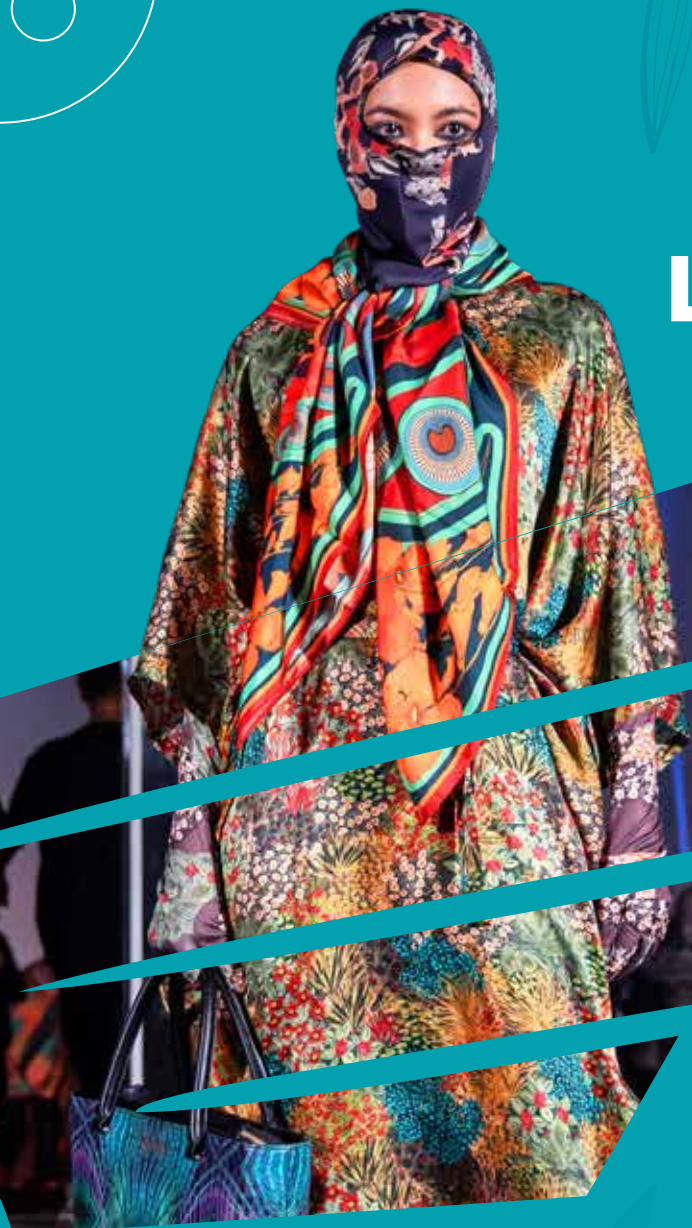
LOOK 1



LOOK 2



R|Elan™
KOOLTEX
SCUBA



LOOK 3



LOOK 4



R|Elan™
GREENGOLD
SATIN



LOOK 5



LOOK 6



R|Elan™
GREENGOLD
GEORGETTE



LOOK 7



LOOK 8



R|Elan™
GREENGOLD
MOSS CREPE



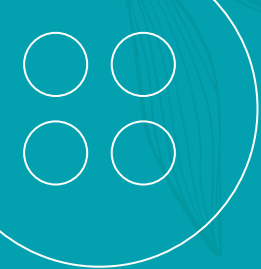
LOOK 9



LOOK 10



R|Elan™
SUPERFEEL
SAPAN



www.r-elan.com